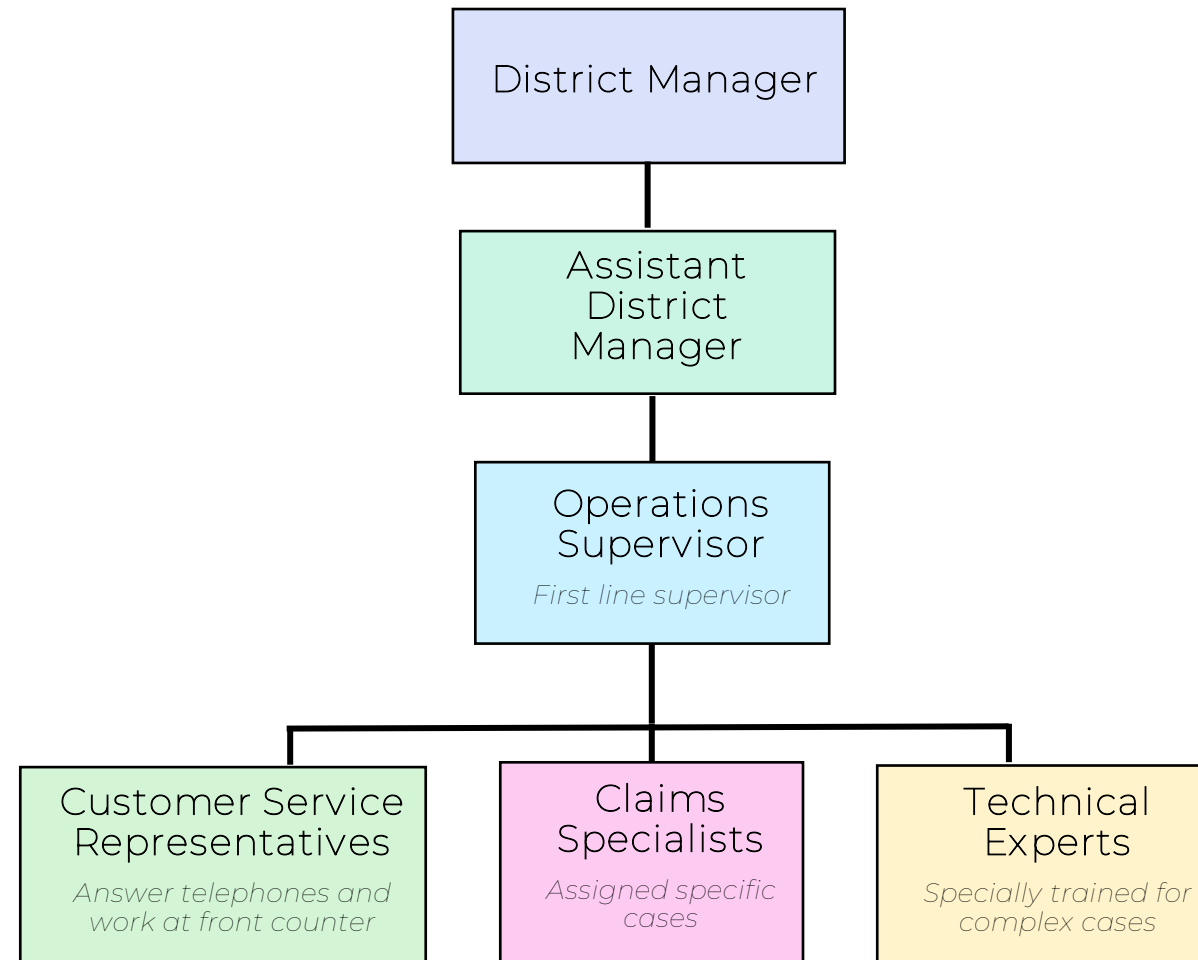


Social Security Administration Field Office Organization Chart



Social Security Administration Public Affairs Specialists

Regional Communications Director

Patricia Raymond

sf.rpa@ssa.gov

(510)970-8430

Public Affairs Specialist for Northern
California and Sacramento

Michael Texeira

(877)656-5837, ext. 11911

Michael.Teixeira@ssa.gov

Public Affairs Specialist for San
Francisco Bay Area and San Jose

Grace Samson

(877) 700-4842

Grace.Samson@ssa.gov

Public Affairs Specialist for Los
Angeles County

Guillermo Barron

(866)931-0340, ext. 11831

Guillermo.Barron@ssa.gov

Public Affairs Specialist for following
counties:

Orange and San Diego

Jeffrey Rodriguez

(888) 452-7964, ext. 24305

Jeffrey.Rodriguez@ssa.gov

Public Affairs Specialist for
following counties:

Los Angeles, Santa Barbara, San Luis
Obispo, and Ventura

Jacqueline Zaragoza

(888)256-3394, ext. 27201

Jacqueline.Zaragoza@ssa.gov

Public Affairs Specialist for following
cities and counties: Riverside, San
Bernardino, Pomona, West Covina,
Glendora

Teresa Campbell

(866) 964-0991, ext. 12407

Teresa.Campbell@ssa.gov