

CHANGEWELLPROJECT
PARTNERING TO STRENGTHEN COMMUNITY SYSTEMS



Monthly Office Hours for Program Leaders

Tuesday, August 16, 2022 ● 10:00 AM

Welcome!



Introductions

- Your Name
- Your County or Tribal Community
- CDSS Program

Today's Session Overview

This is *your* space.

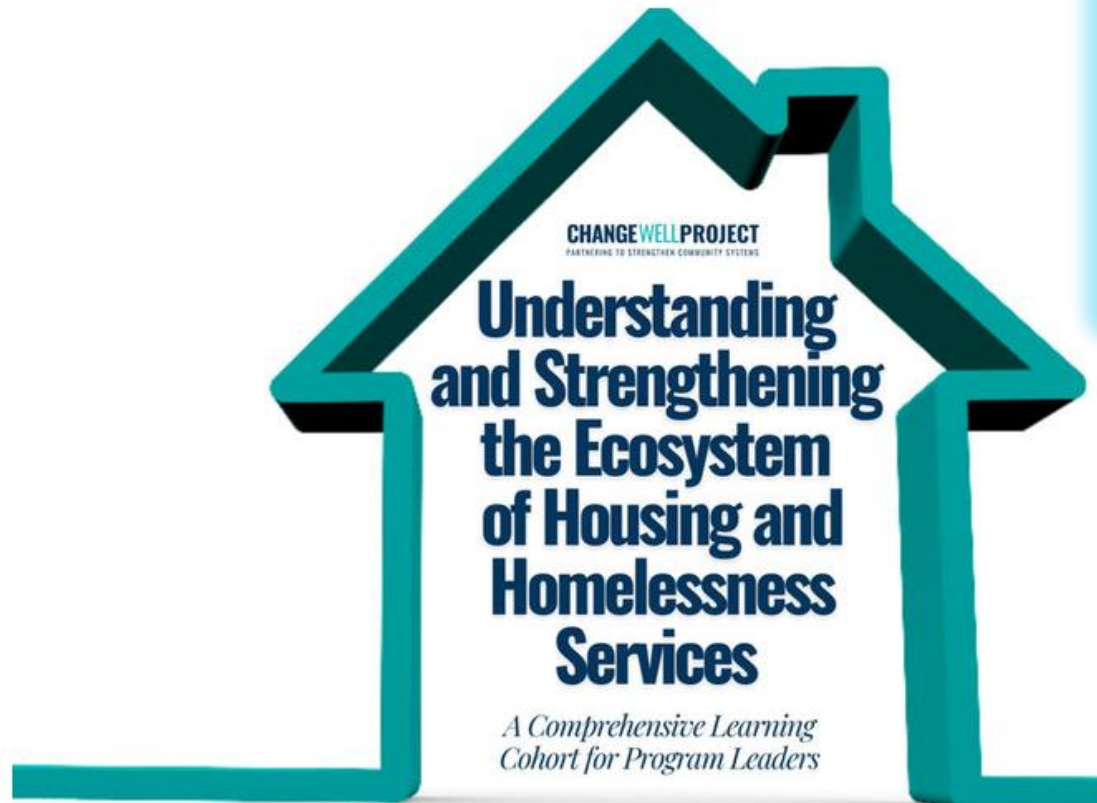
This is always a space to ask any of your questions about CDSS programs!

Today's Session:

- Program Leaders Cohort Launch
- Program Focus: Bringing Families Home



Program Leaders Cohort Launch



An intensive learning experience to deepen understanding of homeless systems of care, system dynamics, effective practices, and core concepts of CDSS-funded programs.

- First Cohort launching this week
 - All registration slots are filled
- Next Cohort will launch September
 - Stay tuned for updates

Overview of Program Leaders Cohort

Self paced learning format (Digital Learning Platform) + Virtual Office Hours

Six
Modules

Primer on
Homelessness

Homelessness
System
Coordination

Housing
Activities and
Services

System Components
& Program
Interventions

Introduction to
Effective
Practices

CDSS Programs

Bringing Families Home

Significant expansion of
BFH in 2021-22



22 grantees in 2019-20



49 grantees in 2021-22



BFH Program Funding

The 2019-20 California Budget Act included a state appropriation of \$25 million General Fund (one-time) for BFH, available for a three-year period from July 2019 through June 2022. The program required a dollar-for-dollar grantee match, bringing the total program to \$50 million. The Budget Act of 2021 appropriated 92.5 Million in General Funds in FY 2021-22, available for expenditure through June 2024.



Ynostroza, S. (2021, July 1). Bringing Families Home. CDSS. Retrieved August 5, 2022, from <https://www.cdss.ca.gov/inforesources/cdss-programs/housing-programs/bringing-families-home-program>

BFH Eligibility Components

Various caregivers receiving child welfare services may be eligible for BFH services, including:

- Biological parents
- Guardians
- Kinship guardians (e.g. grandparents)

01

Family or individual receives child welfare services at the time eligibility is determined.

02

Are homeless, at risk of homelessness, or *in a living situation that cannot accommodate the child or multiple children in the home*, including individuals who have not received an eviction notice.

03

Family or individual voluntarily agrees to participate in the program.

04

Family has been determined appropriate for reunification or child/ren are at risk of foster care placement.

BFH Special Definitions

“Living Situation that Cannot Accommodate a Child”

A living situation that cannot accommodate a child or multiple children is one that meets *all three* of the following requirements:

- Parent or guardian's nighttime residence would not be adequate or appropriate long-term housing placement due to living situations that jeopardize the physical or mental health, safety/well-being of the child, as well as situations where a lease, living arrangement, or tenancy would be terminated for the family if the child/children were living in the home.
- Have no subsequent permanent residence secured.
- Lack resources or support networks.

“At Risk of Homelessness”

For BFH, a family is considered at risk if they meet *all three* of the following requirements:

- Families experiencing housing instability that places them at risk of becoming homeless, including recipients who have not yet received an eviction notice.
- Have no subsequent permanent residence secured.
- Lack resources or support networks needed to stabilize their unique housing situation and secure subsequent permanent housing.

(This is inclusive of but not limited to the HUD definition of “at risk of homelessness”)

BFH Program Components



**Housing-
Related Case
Management**

**Housing
Navigation**

**Housing-Related
Financial
Assistance**

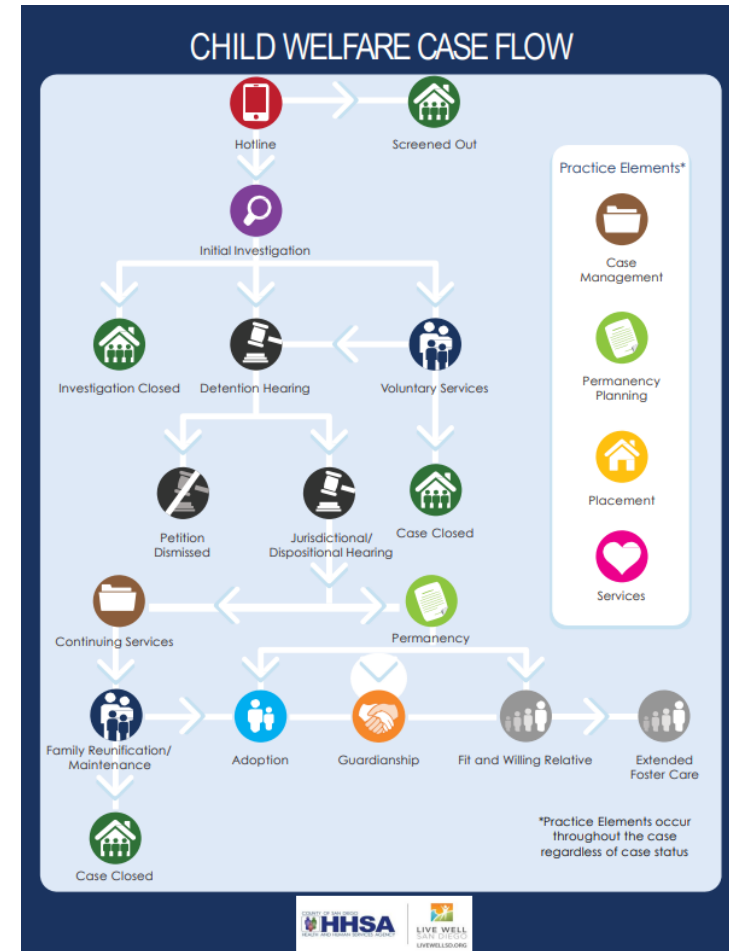
**Housing
Stabilization**

BFH Child Welfare Service Components

All families receiving child welfare services are eligible.

Including, but not limited to:

- Family Reunification
- Family Maintenance
- Emergency Response services
- Families in receipt of voluntary supervision



Questions?



BFH Discussion



Are there program eligibility rules that you are confused how to implement?



What challenges have you had in building a new BFH program or scaling up an existing program?



Are there successes you'd like to share about your BFH program?

Closing

Links to our Website will
be sent after this call.

Please do email us with
questions or issues you
would like addressed
during these Office Hours.

Thank you!

If you have any questions, please email
info@changewellproject.com

CHANGEWELLPROJECT
PARTNERING TO STRENGTHEN COMMUNITY SYSTEMS

CHANGEWELLPROJECT
PARTNERING TO STRENGTHEN COMMUNITY SYSTEMS

CDSS CALIFORNIA
DEPARTMENT OF
SOCIAL SERVICES