

Design Session 1: June 29 & 30

SKID ROW ACTION PLAN (SRAP)

Welcome & Introductions



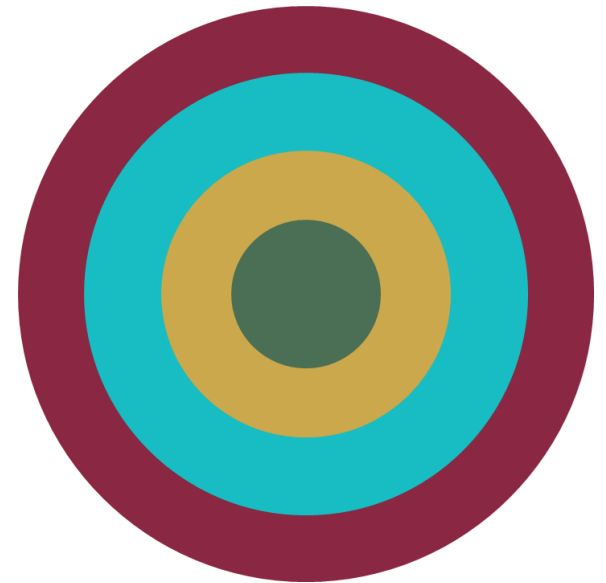
- Welcome from Change Well Project
- Purpose of Sessions

CHANGEWELLPROJECT

PARTNERING TO STRENGTHEN COMMUNITY SYSTEMS

OUR MISSION

Change Well Project supports the transformation of social service systems into equitable, interconnected ecosystems of healing that are directly informed by the needs and experiences of vulnerable individuals and families.



OUR TEAM AND NETWORK

<https://www.changewellproject.com/meettheteam>

- 20+ years of experience in housing & homeless services, social services, local government and public benefits advocacy
- Committed to seamless delivery systems
- Dedicated to each community member
- Partnered with experts across the nation
- Delivering high quality services

Change Well Facilitators

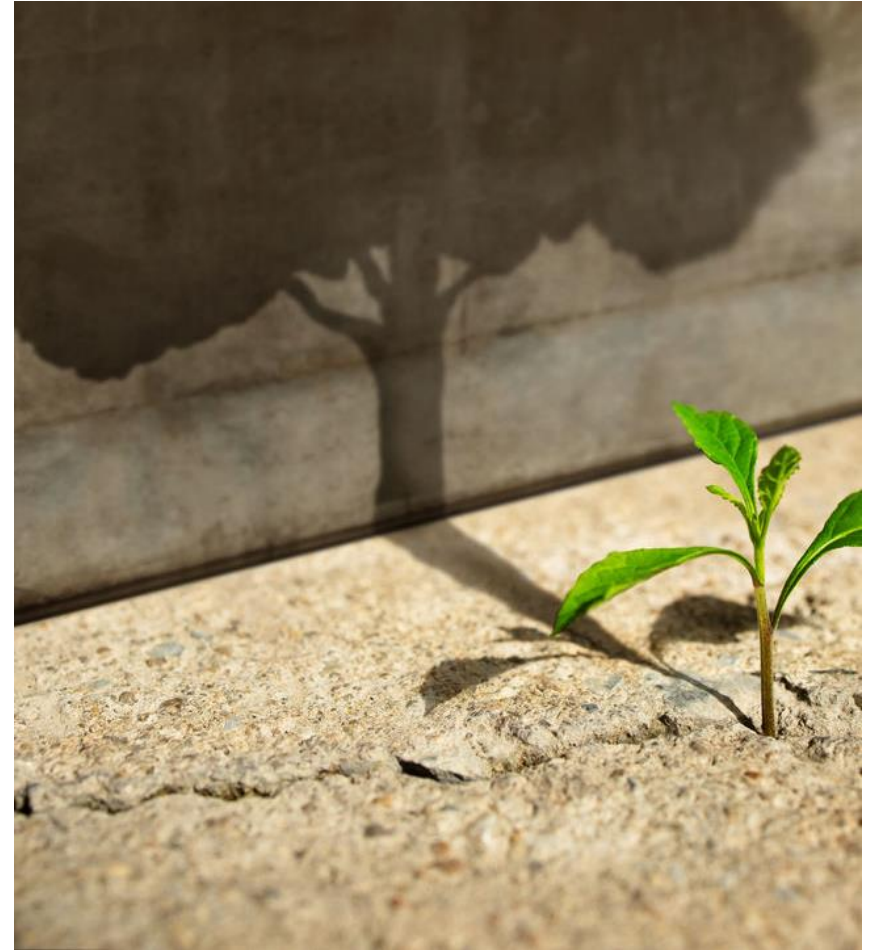
Change
Well
Project

Dr. Alisa Orduña

Connor Johnson

Change Well Project Team

- Elena Fiallo
- Anna Bialik
- Alynn Gausvik
- John Engstrom
- Adria Brodie
- Amber Roth
- Viola Clark



Day 1 Agenda Morning



- Welcome & Introductions
- Land Acknowledgement and Labor Acknowledgement
- Orientation to Space
- Ice Breakers and Community Share Out
- Establishing Community Agreements

- Break (10 Minutes)

- Skid Row Experience Sharing
- Skid Row Action Plan and Recommendations
- Update on Skid Row Action Plan Work
- Where are We Heading?

Day 1 Agenda Afternoon



- Welcome Back
- Gallery Walk Exercise
- Gallery Exercise Report Out
- Introductions to Recommendation Workgroups

- Break (10 Minutes)

- Recommendation Workgroup Time
- Workgroup Community Out
- Visual Narrative Share
- Close Out

Agenda Day 2



- Recap of Day 1
- Feedback from Community
- Goal of Day 2

Break (5 Minutes)

- Setting North Star
- Community Share
- Set Recommendation High Level Goals
- Community Share
- Graphic Harvest
- Next Steps

Land Acknowledgement

The County of Los Angeles recognizes that we occupy land originally and still inhabited and cared for by the Tongva, Tataviam, Serrano, Kizh, and Chumash Peoples. We honor and pay respect to their elders and descendants -- past, present, and emerging -- as they continue their stewardship of these lands and waters. We acknowledge that settler colonization resulted in land seizure, disease, subjugation, slavery, relocation, broken promises, genocide, and multigenerational trauma. This acknowledgment demonstrates our responsibility and commitment to truth, healing, and reconciliation and to elevating the stories, culture, and community of the original inhabitants of Los Angeles County. We are grateful to have the opportunity to live and work on these ancestral lands. We are dedicated to growing and sustaining relationships with Native peoples and local tribal governments.



Labor Acknowledgement

We recognize and acknowledge the labor upon which our country, state, and institution are built. We remember that our country was built on the labor of enslaved people who were kidnapped and brought to the US from the African continent and recognize the continued contribution of their survivors. We also acknowledge all immigrant and indigenous labor, including voluntary, involuntary, trafficked, forced, and undocumented peoples who contributed to the building of the country and continue to serve within our labor force. We recognize that our country is continuously defined, supported, and built upon by oppressed communities and peoples. We acknowledge labor inequities and the shared responsibility for combatting oppressive systems in our daily work.



Orientation to the Space

- Restrooms
- Coffee
- Lunch
- Tables/Workgroups
- Accessibility
- Feedback Opportunities



Ice Breakers

In groups of 3 please share the following:

- Introduce your name, pronouns, preferred affiliation.
- What does community mean to you?
- Describe qualities of "Community"

Community Share



Establishing Community Agreements



In your group of 3:

- Take 2 to 3 minutes to write down 3 agreements that would make meetings a brave space for you to participate.
- Each person then takes 1 minute to share their agreements
- Ask a volunteer to capture any common agreements and prepare to share with the full group.

Community Share



Break- 10 Minutes



Skid Row Stories

Skid Row Action Plan Resident Advisory Committee



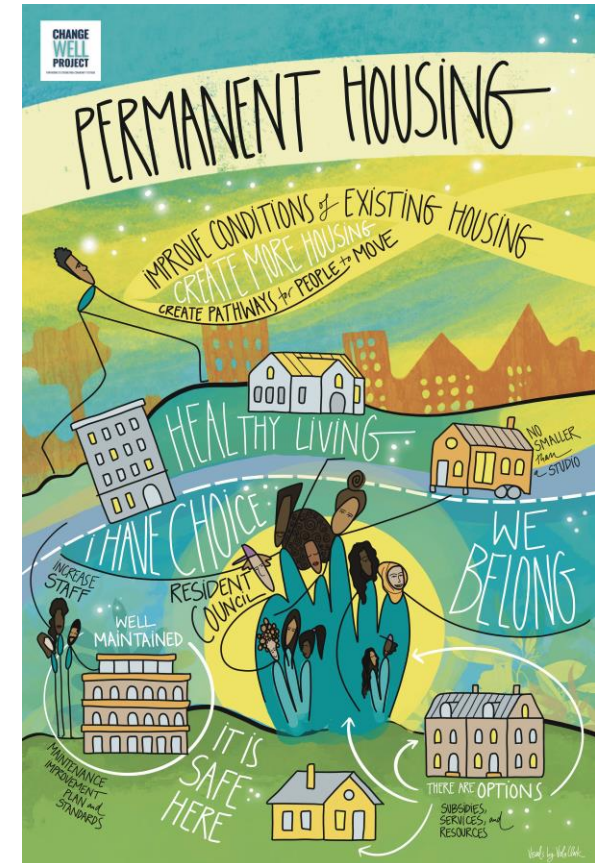
SRAP RECOMMENDATIONS

Governing Principles of SRAP

- Provide all housing and services through trauma-informed practices and in a culturally aware manner, in recognition of the specific community culture of Skid Row.
- Develop services and infrastructure with particular attention to the most vulnerable Skid Row populations, including severely mentally ill individuals, substance users, sex workers, families, undocumented individuals, women, and members of the LGBTQ2IA+ community.
- Develop housing and service spaces which are welcoming and designed with an eye towards positivity, tranquility, warmth, and trust.
- Employ and develop well trained, compassionate, non-judgmental staff who are invested in the wellbeing and nurturing of Skid Row and community members.

Permanent Housing

RECOMMENDATIONS	KEY COMPONENT(S)
Improve conditions of existing permanent housing stock.	Create a resident council of individuals who live in publicly funded permanent housing in Skid Row, which reports to a committee of leaders from City of Los Angeles, County of Los Angeles, and Department of Housing and Urban Development.
	Assess the safety, maintenance, and physical conditions of current permanent housing stock in Skid Row, and develop an improvement action plan based on findings, as well as written safety and maintenance standards of housing programs.
	Increase clinical, non-clinical, and property management staff, including staff to conduct activities and assistance with income and job acquisition.
Create pathways for individuals to move to other permanent housing opportunities.	Create pathways for permanent housing tenants in Skid Row to be able to access other housing opportunities, including multiple subsidy and service types.
	Create a pilot program for DHS Outreach Teams (C3) and DMH HOME teams to work together and directly match individual clients to permanent supportive housing resources in and outside Skid Row.
Increase permanent housing stock.	Establish a standard for new permanent housing that all units must be no smaller than a studio (no shared bathroom, kitchen).
	Create new permanent housing opportunities to serve key target populations, including seniors, families, individuals with high medical and/or psychiatric services, and low-income affordable housing.



Recommendations Review



RECOMMENDATIONS	KEY COMPONENT(S)
Improve access to Interim Housing.	<p>Create Air Traffic Control in Skid Row to implement walk-in referrals and to triage and expeditiously coordinate all the publicly funded interim housing in Skid Row.</p> <p>Implement a no-tolerance policy for returns to homelessness, including a requirement that exits must be approved by the funder.</p>
Improve existing interim housing.	<p>Create an Interim Housing Council, which reviews any interim housing complaints and makes recommendations for rapid resolution.</p> <p>Create a County team that provides on-site technical assistance and support for safety and health conditions.</p> <p>Increase clinical and non-clinical staff.</p> <p>Provide comprehensive harm reduction services including amnesty lockers.</p>
Increase exits from interim to permanent housing.	<p>Increase housing navigation services at interim housing sites.</p>
Increase interim housing stock.	<p>Create additional non-congregate interim housing sites.</p> <p>Create Safe Sleep sites, where unhoused can remain in outside dwellings and be provided supportive services and facilities for self-care.</p> <p>Create new interim housing opportunities to serve key target populations, including seniors, families, individuals with high medical and/or psychiatric services.</p>

Recommendations Review

RECOMMENDATIONS	KEY COMPONENT(S)
Establish a Healthcare Center for residents to access health and behavioral health care 24/7.	Create a Community Advisory Council to guide and provide input on programming and service provision.
	Provide episodic and acute physical and behavioral healthcare support services 24/7.
	Provide Harm Reduction Services including Medication Assisted Treatment (MAT) and substance-use counseling.
	Provide access to medication for acute needs.
Provide immediate pathways to interim housing, respite beds and primary health, mental health, and substance use services.	Create respite beds within the Center and access to interim housing.
	Establish a Skid Row health care provider network which (re)connects users to ongoing primary, behavioral health, and substance abuse services.
Provide transportation to Healthcare Center.	Establish a Transportation Unit, which responds to a 24/7 Healthcare Center hotline and provides transport from all areas of Skid Row to the Healthcare Center.
Establish a Data Sharing Agreement with healthcare, mental healthcare, and substance abuse providers in Skid Row.	Promote coordination of health, mental health, and behavioral health to ensure no wrong door and connection/reconnection to ongoing health care.



Recommendations Review

RECOMMENDATIONS	KEY COMPONENT(S)
Expand substance use services, capacity and treatment options.	Increase number of treatment beds with same day/immediate access including on-site detox beds.
	Provide MAT services and alternative treatments which prioritize the immediate well-being and safety of substance users.
	Provide low-barrier access to harm reduction supplies, including drug composition testing.
	Provide ongoing meaningful and relevant drug health education and support groups, involving drug users and supportive staff, as well as training in first aid, CPR, wound care, overdose reversals, and harm reduction and safe usage, etc.
	Employ community members with experience of drug use.
Create a space for alternatives to substance use.	Offer workforce, social enterprise, and volunteer opportunities.
Provide low-barrier access to services and space.	Provide services 24/7/365 days of the year without time limits on length of visits.
	Create a welcoming space that includes food, activities, wellness, and personal care facilities, and which is free from monitoring by law enforcement.
	Provide onsite physical and mental health services including MAT and outpatient detox, as well as Overdose Prevention Centers/safe consumption sites when approved by LA County and LA City.
	Establish harm reduction satellite hubs within existing provider, PSH, Interim, and other sites.
Facilitate access to the Drug Health Center.	Establish a 24/7 Drug Health Center hotline which connects all areas of Skid Row to the Drug Health Center with on-call overdose prevention assistance and connections to relevant services.
	Establish a Transportation Unit to respond to hotline requests requiring access to the Drug Health Center.



Recommendations Review



RECOMMENDATIONS	KEY COMPONENT(S)	ESTIMATED BUDGET
Create a low-barrier space for services and connections.	Purchase a centrally located site with sufficient space to host the variety of services outlined for the Space.	
	Include in the space's infrastructure a stage for performances, seating and charging stations, personal care facilities (bathrooms, showers, laundry), and gardens.	
Provide comprehensive services	<p>Recruit service providers to provide the following services including:</p> <ul style="list-style-type: none"> • Health, mental health, behavioral health • Legal aid & ticket expungement • Public benefits and income via the Department of Public Social Services and the Social Security • ID receipt via the CA Department of Motor Vehicles(DMV). • Budgeting, money management, credit repair • Veterinary services • Daily community activities including spiritual programming 	

Recommendations Review

RECOMMENDATIONS	KEY COMPONENT(S)
Create local economic opportunities.	Prioritize community-based hiring, and develop recruitment and retention practices which meet the needs of community members seeking employment.
	Support local entrepreneurship through expansion of social enterprise programs.
Build the capacity of the workforce which provides services in the Skid Row community.	Increase compensation and retention incentives for service provider staff.
	Provide training, skill-building, and staff development opportunities which promote continued learning.
	Embed ongoing wellness activities and resources for staff to address burn out and vicarious trauma.
Establish a Community Ambassador Program that employs Skid Row residents to promote safety, care, and a message of empowerment to the unhoused residents of Skid Row.	Augment programs employing local residents for the promotion of community safety and beautification.
Create a dignified and welcoming neighborhood by improving the accessibility and built environment of Skid Row.	Enhance and replace street lighting.
	Add green space and safe walking paths.
	Increase sanitation facilities, including gender neutral facilities.
	Commission street art featuring local artists.
Sustain a Resident Advisory Committee to oversee the implementation for the Skid Row Action Plan.	The Committee serves to advocate on behalf of the residents of Skid Row and provide ongoing feedback and support throughout SRAP implementation, through problem solving and uplifting concerns to governmental partners.




UPDATE ON THE SKID ROW ACTION PLAN

What has happened since December?
Progress to date

LA County Board Motion in June 2022

Develop a comprehensive/holistic Skid Row Action Plan in coordination with Skid Row residents, service providers, governmental agencies, other stake holders

- Dr. Alisa Orduña (consultant) and HFH staff facilitated a total of 15 workgroup meetings from August 2022 through November 2022.
- These meetings included community members, local organizations, service providers, LA City and LA County departments, and other stakeholders.
- CEO-HI facilitated two meetings with the City of Los Angeles (LA City) and two meetings with the applicable Los Angeles County (LA County) departments and LAHSA.
- Skid Row Resident Advisory Committee guided SRAP's development.
- The meetings informed the SRAP recommendations.
- On November 18, 2022, the Skid Row Resident Advisory Committee hosted a festival for the community to review draft recommendations, provide feedback, and identify priorities in each workgroup category.
- On December 14, 2022, a final meeting with stakeholders and contributors was conducted to present the groups' recommendations.

 Permanent Housing	KEY COMPONENT(S)	Status
Improve conditions of existing permanent housing stock.	Create a resident council of individuals who live in publicly funded permanent housing in Skid Row, which reports to a committee of leaders from City of Los Angeles, County of Los Angeles, and Department of Housing and Urban Development.	
	Assess the safety, maintenance, and physical conditions of current permanent housing stock in Skid Row, and develop an improvement action plan based on findings, as well as written safety and maintenance standards of housing programs.	
	Increase clinical, non-clinical, and property management staff, including staff to conduct activities and assistance with income and job acquisition.	
Create pathways for individuals to move to other permanent housing opportunities.	Create pathways for permanent housing tenants in Skid Row to be able to access other housing opportunities, including multiple subsidy and service types.	
	Create a pilot program for DHS Outreach Teams (C3) and DMH HOME teams to work together and directly match individual clients to permanent supportive housing resources in and outside Skid Row.	CES Restructure
Increase permanent housing stock.	Establish a standard for new permanent housing that all units must be no smaller than a studio (no shared bathroom, kitchen).	
	Create new permanent housing opportunities to serve key target populations, including seniors, families, individuals with high medical and/or psychiatric services, and low-income affordable housing.	Coming online (2,000 or so in pipeline)



	KEY COMPONENT(S)	Status
Improve access to Interim Housing.	Create Air Traffic Control in Skid Row to implement walk-in referrals and to triage and expeditiously coordinate all the publicly funded interim housing in Skid Row.	In process
	Implement a no-tolerance policy for returns to homelessness, including a requirement that exits must be approved by the funder.	Completed (HFH)
Improve existing interim housing.	Create an Interim Housing Council, which reviews any interim housing complaints and makes recommendations for rapid resolution.	
	Create a County team that provides on-site technical assistance and support for safety and health conditions.	In process
	Increase clinical and non-clinical staff.	In process
	Provide comprehensive harm reduction services including amnesty lockers.	In process
Increase exits from interim to permanent housing.	Increase housing navigation services at interim housing sites.	In process Adding 225 slots pre-match ICMS
Increase interim housing stock.	Create additional non-congregate interim housing sites.	In process
	Create Safe Sleep sites, where unhoused can remain in outside dwellings and be provided supportive services and facilities for self-care.	
	Create new interim housing opportunities to serve key target populations, including seniors, families, individuals with high medical and/or psychiatric services.	Implemented 45 new beds at Vagabond -Poised to add 350 in partnership with City at Grand Hotel -Poised to add 90 new beds at safe Landing site at Cecil



24/7 Low
Barrier
Health
Center

Establish a Healthcare Center for residents to access health and behavioral health care 24/7.

Provide immediate pathways to interim housing, respite beds and primary health, mental health, and substance use services.

Provide transportation to Healthcare Center.

Establish a Data Sharing Agreement with healthcare, mental healthcare, and substance abuse providers in Skid Row.

KEY COMPONENT(S)

STATUS

Create a Community Advisory Council to guide and provide input on programming and service provision.

Provide episodic and acute physical and behavioral healthcare support services 24/7.

Provide Harm Reduction Services including Medication Assisted Treatment (MAT) and substance-use counseling.

Provide access to medication for acute needs.

Create respite beds within the Center and access to interim housing.

Establish a Skid Row health care provider network which (re)connects users to ongoing primary, behavioral health, and substance abuse services.

Establish a Transportation Unit, which responds to a 24/7 Healthcare Center hotline and provides transport from all areas of Skid Row to the Healthcare Center.

Promote coordination of health, mental health, and behavioral health to ensure no wrong door and connection/reconnection to ongoing health care.

Harm Reduction Health Hub (aka Drug User Hub)	KEY COMPONENT(S)	STATUS
Expand substance use services, capacity and treatment options.	Increase number of treatment beds with same day/immediate access including on-site detox beds.	
	Provide MAT services and alternative treatments which prioritize the immediate well-being and safety of substance users.	In process
	Provide low-barrier access to harm reduction supplies, including drug composition testing.	In process
	Provide ongoing meaningful and relevant drug health education and support groups, involving drug users and supportive staff, as well as training in first aid, CPR, wound care, overdose reversals, and harm reduction and safe usage, etc.	In process
	Employ community members with experience of drug use.	In process
Create a community engagement and skill development space.	Offer workforce, social enterprise, and volunteer opportunities.	
Provide low-barrier access to services and space.	Provide services 24/7/365 days of the year without time limits on length of visits.	
	Create a welcoming space that includes food, activities, wellness, and personal care facilities, and which is free from monitoring by law enforcement.	
	Provide onsite physical and mental health services including MAT and outpatient detox, as well as Overdose Prevention Centers/safe consumption sites when approved by LA County and LA City.	
Facilitate access to the Drug Health Center.	Establish harm reduction satellite hubs within existing provider, PSH, Interim, and other sites.	In process
	Establish a 24/7 Drug Health Center hotline which connects all areas of Skid Row to the Drug Health Center with on-call overdose prevention assistance and connections to relevant services. Establish a Transportation Unit to respond to hotline requests requiring access to the Drug Health Center.	



SAFE
SERVICES
SPACE

Create a low-barrier space for services and connections.

KEY COMPONENT(S)

STATUS

Purchase a centrally located site with sufficient space to host the variety of services outlined for the Space.

Include in the space's infrastructure a stage for performances, seating and charging stations, personal care facilities (bathrooms, showers, laundry), and gardens.

Provide comprehensive services

Recruit service providers to provide the following services including:

- Health, mental health, behavioral health
- Legal aid & ticket expungement
- Public benefits and income via the Department of Public Social Services and the Social Security.
- Military and Veterans Affairs
- Aging and Disabilities Services
- Economic Opportunities
- ID receipt via the CA Department of Motor Vehicles(DMV).
- Budgeting, money management, credit repair
- Veterinary services
- Daily community activities including spiritual programming



	KEY COMPONENT(S)	STATUS
Create local economic opportunities.	Prioritize community-based hiring and develop recruitment and retention practices which meet the needs of community members seeking employment.	
	Support local entrepreneurship through expansion of social enterprise programs.	
Build the capacity of the workforce which provides services in the Skid Row community.	Increase compensation and retention incentives for service provider staff.	MDTs, cost analysis
	Provide training, skill-building, and staff development opportunities which promote continued learning.	In process
	Embed ongoing wellness activities and resources for staff to address burn out and vicarious trauma.	In process
Establish a Community Ambassador Program that employs Skid Row residents to promote safety, care, and a message of empowerment to the unhoused residents of Skid Row.	Augment programs employing local residents for the promotion of community safety and beautification.	
Create a dignified and welcoming neighborhood by improving the accessibility and built environment of Skid Row.	Enhance and replace street lighting.	
	Add green space and safe walking paths.	
	Increase sanitation facilities, including gender neutral facilities.	
	Commission street art featuring local artists.	
Sustain a Resident Advisory Committee to oversee the implementation for the Skid Row Action Plan.	The Committee serves to advocate on behalf of the residents of Skid Row and provide ongoing feedback and support throughout SRAP implementation, through problem solving and uplifting concerns to governmental partners.	In process

Next Steps-LA County Board Motion

Develop a comprehensive/holistic Skid Row Action Plan in coordination with Skid Row residents, service providers, governmental agencies, other stake holders

- Change Well Consultants are reconvening workgroup meetings from June 2023 through December 2023.
- These meetings include community members, local organizations, service providers, LA City and LA County departments, and other stakeholders.
- The meetings will focus on developing implementation plans and estimated budgets for all recommendations.
- Skid Row Resident Advisory Committee continues to oversee the SRAP work.



One Step Forward – Programs Funding or Implemented-To Date

Every Woman Housed

Board Motion in early 2022 on Every Woman Housed-addressing/prioritizing vulnerable women in Skid Row (Measure H and ERF1 funded)

Every Woman Housed Program	Services Provided	Provider	Administrator
Interim Housing (DTLA Hotel)	Interim Housing Services + Supportive Services	DWC	LAHSA
Interim Housing (Vagabond-45 rooms)	Interim Housing Services + Supportive Services	Weingart	HFH
2 Woman Focused Outreach Teams	Street-Based Engagement/Linkages	TPC	HFH
Landlord Outreach	Matching tenants to landlords	PATH	LAHSA
Time Limited Subsidies	Rapid rehousing	DWC	LAHSA

Skid Row Encampment Resolution Funding Round 2

- 90 rooms of IH at Cecil (Safe Landing)
- 350 enhanced services rooms at Grand
- 250 permanent housing FHSP/ICMS slots
- 500 housing navigation slots



Leveraging:

- Outreach services and coordination
- 2,000 permanent housing opportunities in pipeline
- Existing interim housing of over 1,000 IH beds in Skid Row.

Skid Row Services Campus-Long Term Permanent Plan

Phase 1

Harm Reduction Health Hub

- Will include a drop in space, exam rooms for wound care, abscess care, STD/HIV screening, MAT, prep care for sex workers, 10-15 respite beds, methadone window, SUD counseling/groups, eventually safe consumption.

Safe Services

- Outside space that will be created into a park like environment with 10 permanent booths for hoteling to bring various services including veterinary, DMV, DPSS, legal, etc.
- Gardens, and a stage for activities, faith-based services, performances, etc.
- Facilities that include toilets, showers, laundry, lockers.
- To be operated by a CBO.
- Community Ambassador Program

Phase 2

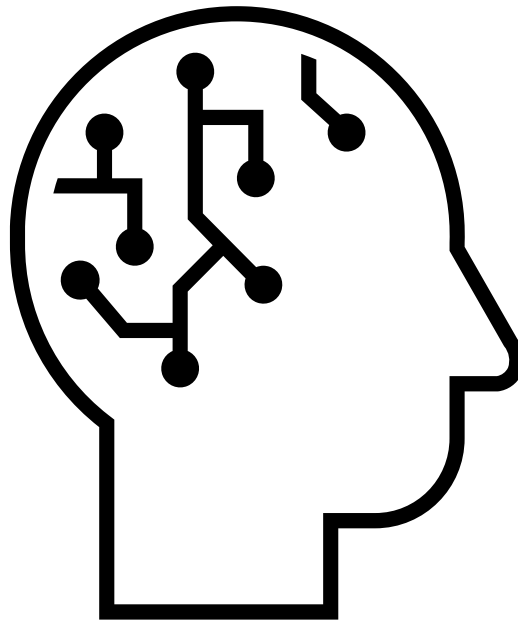
24/7 Urgent Care/Safe Landing + 350 interim housing beds

- Will include a 24/7 urgent care/clinic for walk-ins
- 50 beds for observation/triage and 300 non congregate interim housing beds

Social Enterprise

- Job training
- Job placements

Take a Pause



WHERE ARE WE GOING?

PROPOSED ACTIVITIES

Goal: To engage community stakeholders in the design and build out of the SRAP implementation plan. To get there, we will host (4) two-day community sessions to:



Develop a common understanding of the recommendations, a common aim, and define what success looks like for each recommendation.



Design the look and feel of the components and develop detailed workplans and/or client journey maps



Identify resources to fund our designs/workplans



Obtain commitments from community partners



CWP will support the development of community dashboards to monitor our success!

PROPOSED TIMELINE

Workshop I: June 2023

Establish Goals
Review SRAP work-to-date
Discuss Priorities
Form Workgroups
(Where we are, what's most important, what do each of us want to focus on most?)

Workshop III: October 2023

Identify Resources
Finalize Workplans
Finalize Client Path
Plan Key Partner Engagement
(What are we asking for and who are we asking?)



Workshop II: August 2023

Begin to Develop Workplans
Begin to Develop Client Path
(What are we going to do and how is it going to work for clients?)

Workshop IV: December 2023

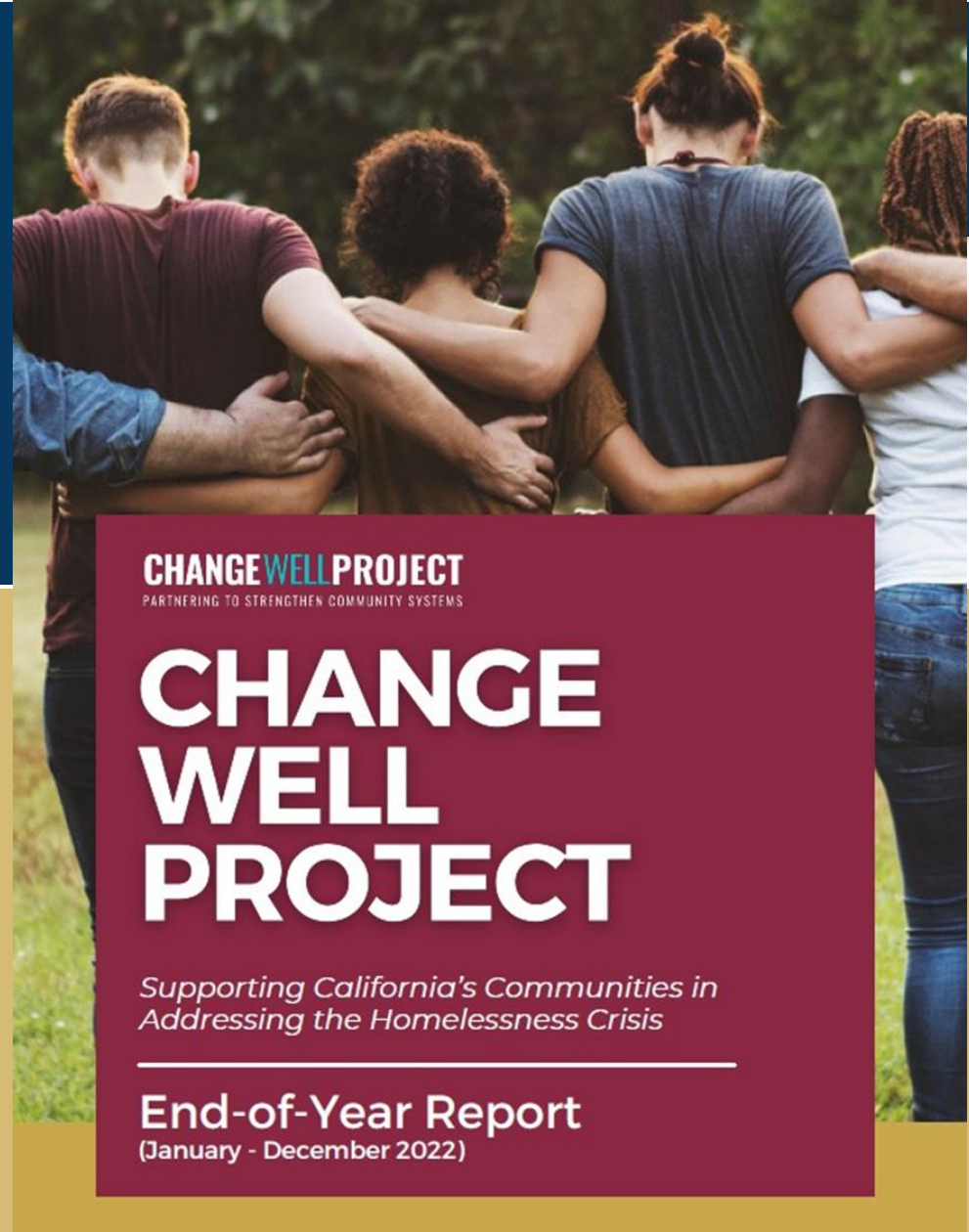
Present Plan to Stakeholders
Commitments from Key Partners
(We know what we are going to do, how we will do it, and who will help get it done!)

How We Will Work Together

- We will meet in August, October and December for two days of design workshops
- In between we will coordinate virtual meetings with the workgroup members and with government partners that have resources we may need to tap into.
- We will host smaller community sessions, so that we include feedback from folks that are not at the table today.
- We will post the graphics and updates from each session on our website and gather feedback

WEBSITE

www.changewellproject.com/skidrowactionplan



CHANGEWELLPROJECT
PARTNERING TO STRENGTHEN COMMUNITY SYSTEMS

CHANGE WELL PROJECT

*Supporting California's Communities in
Addressing the Homelessness Crisis*

End-of-Year Report
(January - December 2022)

Day 1 Agenda Afternoon



Day 1 Afternoon

- Welcome Back
- Gallery Walk Exercise
- Gallery Exercise Report Out
- Introductions to Recommendation Workgroups

- Break (10 Minutes)

- Recommendation Workgroup Time
- Workgroup Community Share Out
- Visual Narrative Share
- Close

Lunch Break – 45 Mins



WELCOME BACK!

DAY 1 AFTERNOON

Day 1 Agenda Afternoon



- Welcome Back
- Gallery Walk Exercise
- Gallery Exercise Report Out
- Introductions to Recommendation Workgroups

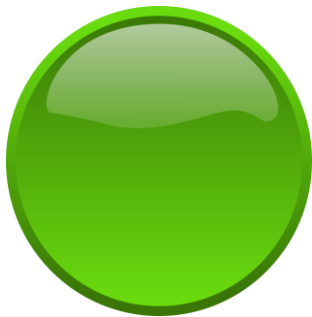
- Break (10 Minutes)

- Recommendation Workgroup Time
- Workgroup Community Share Out
- Visual Narrative Share
- Close

GALLERY CAFÉ EXERCISE

PART 1 – LARGE GROUP

Which of these key
components would make the
biggest difference to you?



Place a green dot

Community Share



GALLERY CAFÉ EXERCISE

PART 2 – SMALL GROUP

Small Group Instructions

1. Let's now move into our workgroups
2. If you know which workgroup you would like to contribute to you can move there when we say GO!
3. If you are unsure, we invite you to move around the room and listen in on the conversation to see if that is where you would like to be. No commitments yet.
3. Your small group facilitator will offer guiding questions that we would like each group to discuss
4. Finally, we will reconvene at the end for community sharing.

Workgroup Prep for Community Share

- What stands out to you about these choices?
- What were some aha moments?
- Why will these components make a difference in this community?

Community Share



Questions?



Closing

- Announcements
- Community Basket
- Feedback Box
- Tomorrow's Meeting: 9:30 to 12:30

Thank you!!!!